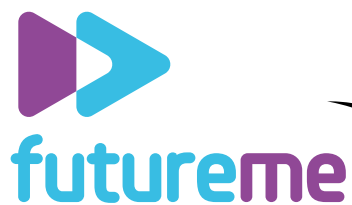


WHAT CAN? WE CAN!





WHERE ARE YOU AT?

THIS GUIDE IS DESIGNED TO SHOW YOU HOW HIGHER EDUCATION COULD HELP YOU REACH YOUR GOALS. BEFORE YOU TAKE A LOOK, HERE'S A CHANCE TO REFLECT ON WHAT YOU ALREADY KNOW ABOUT HIGHER EDUCATION AND TO IDENTIFY ANY QUESTIONS YOU HAVE.

NAME:

SCHOOL YEAR:

THREE THINGS I ALREADY KNOW ABOUT HIGHER EDUCATION:

1.

2.

3.

THREE QUESTIONS I HAVE ABOUT HIGHER EDUCATION:

1.

2.

3.

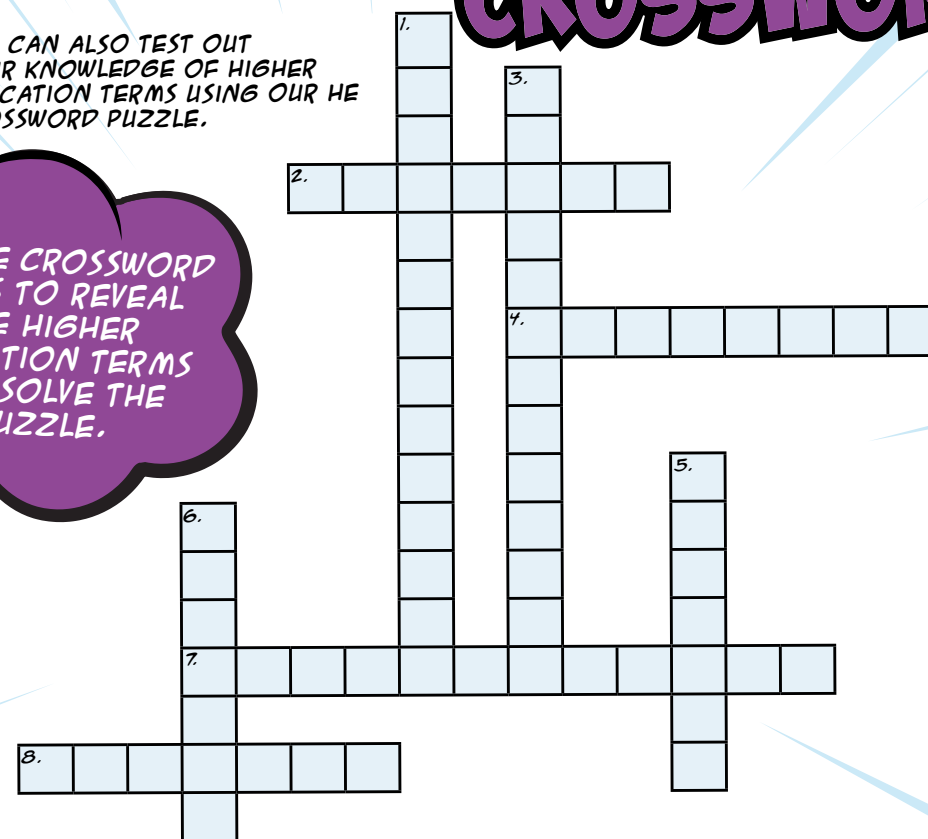
CONTENTS

- 4 **NEXT STEPS**
DESIGNED BY MOLLY, EASINGTON ACADEMY
- 6 **FLYING HIGH**
DESIGNED BY MILLY, BIDDICK ACADEMY
- 8 **START YOUR JOURNEY**
DESIGNED BY LUKE, LORD LAWSON OF BEAMISH ACADEMY
- 10 **A STUDENT STORY**
DESIGNED BY ISABELLA, WALKER RIVERSIDE ACADEMY
- 12 **YOUR TIME IN HIGHER EDUCATION**
DESIGNED BY TRINITY, DURHAM SIXTH FORM CENTRE
- 14 **MY STUDENT LIFE**
DESIGNED BY YOU

HIGHER EDUCATION CROSSWORD

YOU CAN ALSO TEST OUT YOUR KNOWLEDGE OF HIGHER EDUCATION TERMS USING OUR HE CROSSWORD PUZZLE.

USE THE CROSSWORD CLUES TO REVEAL THE HIGHER EDUCATION TERMS AND SOLVE THE PUZZLE.



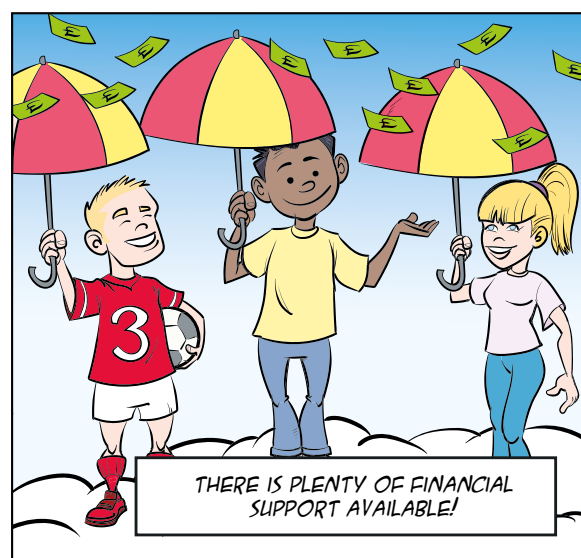
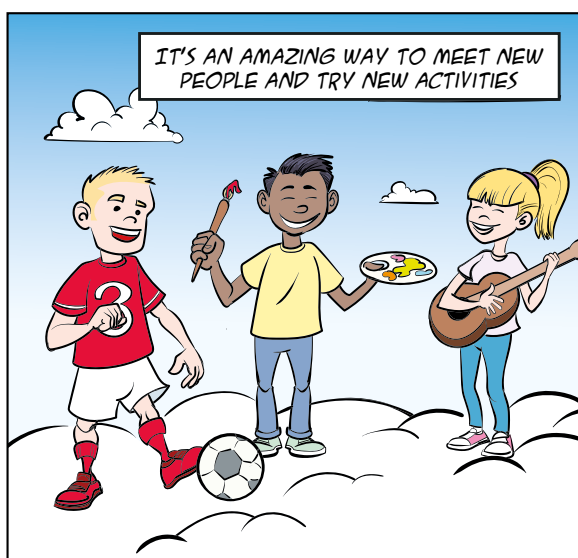
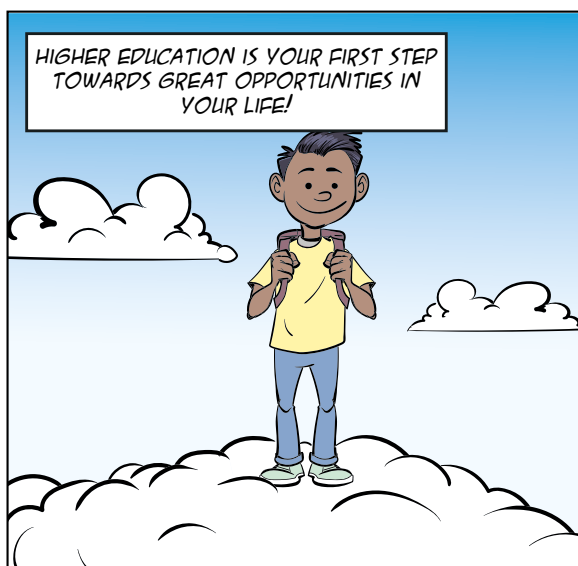
DOWN

- 1. A COMBINATION OF WORK AND STUDY BY MIXING PAID ON-THE-JOB TRAINING WITH CLASSROOM LEARNING (14)
- 3. AN AWARD ACHIEVED AFTER SUCCESSFULLY COMPLETING A COURSE OF STUDY (13)
- 5. A TYPE OF LESSON WHERE A SMALLER GROUP OF PEOPLE HAVE AN OPEN DISCUSSION ABOUT A TOPIC (7)
- 6. A STUDENT ORGANISATION OR CLUB FORMED FOR A SPECIFIC PURPOSE OR ACTIVITY (7)

ACROSS

- 2. A SUM OF MONEY GIVEN TO SOMEONE TO ENABLE THEM TO STUDY (7)
- 4. A TERM REFERRING TO FIRST YEAR STUDENTS (8)
- 7. SOMETHING THAT YOU MAY GAIN THROUGH HIGHER EDUCATION (I.E. THE FREEDOM TO MAKE YOUR OWN DECISIONS AND CHOICES) (12)
- 8. A TYPE OF LESSON WHERE LOTS OF PEOPLE (SOMETIMES HUNDREDS) WILL LISTEN TO A TALK ON A PARTICULAR TOPIC BY SOMEONE WHO IS AN EXPERT ON THAT SUBJECT (7)

ANSWERS ON PG. 15.



DESIGNED BY MOLLY, EASINGTON ACADEMY

HIGHER EDUCATION ISN'T JUST UNIVERSITY!

TYPES OF HIGHER EDUCATION

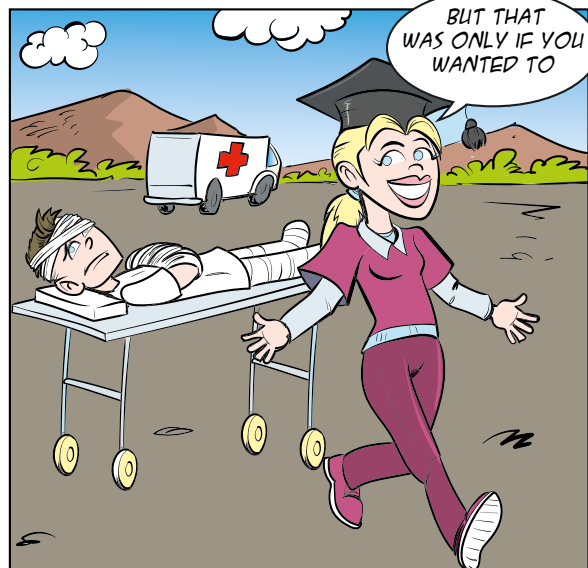
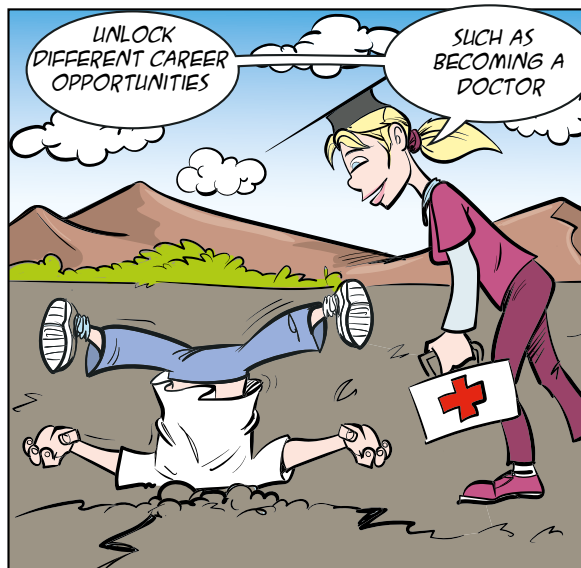
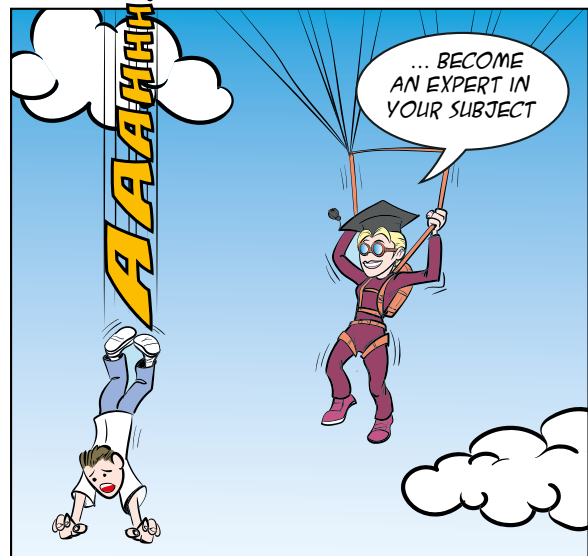
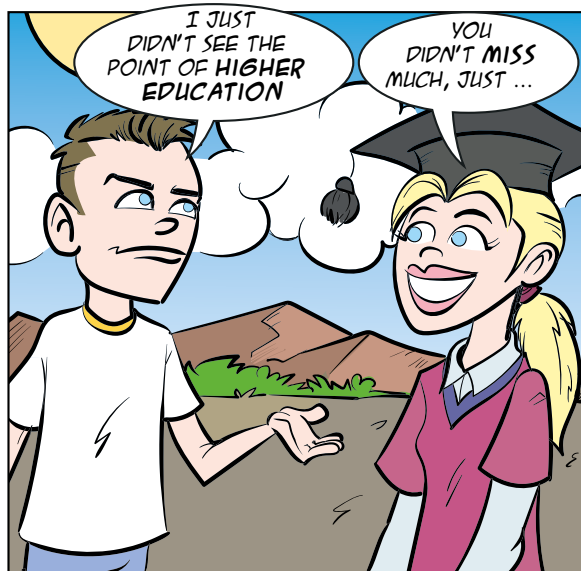
HIGHER EDUCATION REFERS TO ANY QUALIFICATION AT LEVEL 4 OR ABOVE. YOU MIGHT CHOOSE TO GO ON TO HIGHER EDUCATION AFTER YOU HAVE FINISHED STUDYING AT SIXTH FORM OR COLLEGE. MANY PEOPLE BELIEVE THAT HIGHER EDUCATION JUST MEANS STUDYING FOR A DEGREE AT UNIVERSITY, BUT THERE ARE LOTS OF OTHER OPTIONS TOO. YOU CAN ALSO STUDY A RANGE OF HIGHER EDUCATION QUALIFICATIONS AT COLLEGE. ALTERNATIVELY, YOU COULD EARN WHILE YOU LEARN BY COMPLETING AN APPRENTICESHIP.

LEVEL	- QUALIFICATION -		
7/8	NVQ 7	MASTER'S DEGREE/DOCTORATE	
6	HIGHER/DEGREE APPRENTICESHIPS NVQ 4-6	MASTER'S DEGREE/DOCTORATE	
5		FOUNDATION DEGREE/ HND	DIPLOMA OF HIGHER EDUCATION
4		HNC	CERTIFICATE OF HIGHER EDUCATION
3	ADVANCED APPRENTICESHIP/ NVQ 3	BTEC CERT/DIPLOMA	AS/A2
2	APPRENTICESHIP/ NVQ 2	BTEC FIRST DIPLOMA	GCSE A*-C / 9-4
1	NVQ 1	GCSE D-F / 3-1	
ENTRY	BASIC SKILLS		

THERE ARE LOTS OF DIFFERENT HIGHER EDUCATION OPTIONS - IT'S ALL ABOUT MAKING THE RIGHT CHOICE FOR YOU!

APPRENTICESHIPS

AN APPRENTICESHIP ALLOWS YOU TO EARN A WAGE ALONGSIDE STUDYING FOR A QUALIFICATION. YOU'LL GET HANDS ON EXPERIENCE IN THE WORKPLACE, WHILST ALSO LEARNING VALUABLE SKILLS THAT ARE NEEDED FOR THE INDUSTRY YOU'RE WORKING IN. APPRENTICES GENERALLY SPEND FOUR DAYS A WEEK AT THEIR PLACE OF WORK AND ONE DAY A WEEK AT A PLACE OF STUDY (SUCH AS A COLLEGE OR UNIVERSITY). IF YOU WANT TO TAKE YOUR EDUCATION TO THE NEXT LEVEL WITHOUT HAVING TO SPEND TOO MUCH TIME IN A CLASSROOM THEN AN APPRENTICESHIP MIGHT BE THE OPTION FOR YOU.



DESIGNED BY MILLY, BIDDICK ACADEMY

COURSES

DID YOU KNOW THAT THERE ARE MORE THAN 50,000 HIGHER EDUCATION COURSES ON OFFER ACROSS THE UK AT OVER 395 COLLEGES AND UNIVERSITIES?

THERE ARE SO MANY COURSES THAT YOU COULD STUDY -- SOME OF THEM WILL BE IN FAMILIAR SUBJECT AREAS, BUT THERE ARE LOTS OF SUBJECTS AVAILABLE AT HIGHER EDUCATION WHICH AREN'T TAUGHT AT SCHOOL AND WHICH YOU MIGHT NEVER HAVE CONSIDERED.

futureme

OfS Uni Connect Programme

FIND YOUR PATH

IT'S NEVER TOO EARLY TO START THINKING ABOUT YOUR FUTURE OPTIONS. HERE ARE SOME QUESTIONS TO ASK YOURSELF:

- WHAT IS YOUR FAVOURITE SUBJECT NOW? WHAT ARE YOU REALLY INTERESTED IN LEARNING ABOUT?
- DO YOU HAVE A SPECIFIC CAREER IN MIND? IS A PARTICULAR SUBJECT OR QUALIFICATION REQUIRED FOR THIS CAREER PATH?

FINDING THE RIGHT SUBJECT FOR YOU CAN BE THE KEY TO UNLOCKING FUTURE OPPORTUNITIES!

SUBJECT SCRAMBLE

SNUBIESS TENAGNAMME

MISNARLOU

SUMIC

YONSIPATHERY

NASPISH

HAPGRIC SIGNED

INNERINGGEE

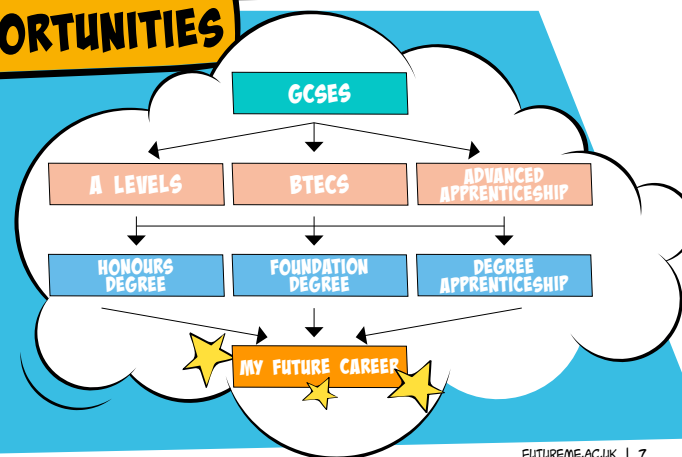
MONIVLANTERNE CENICSE

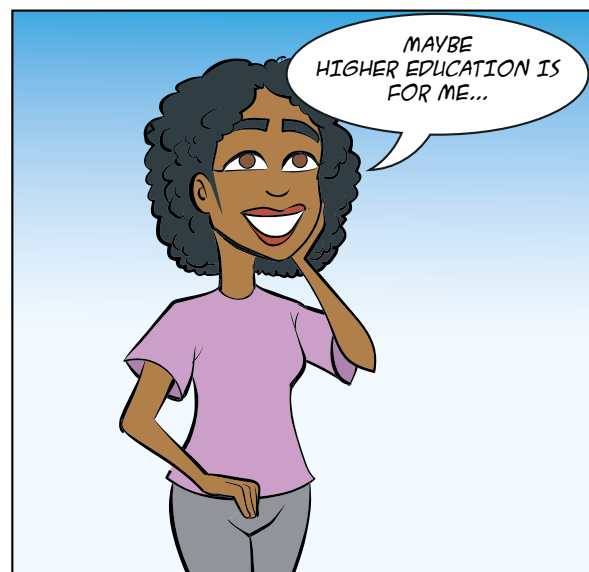
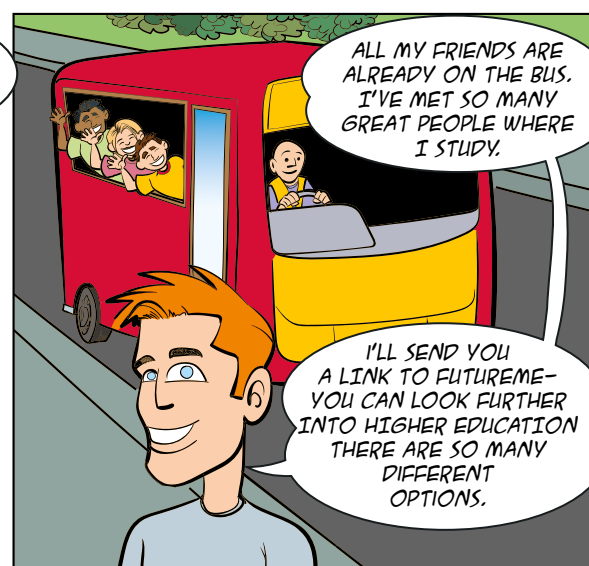
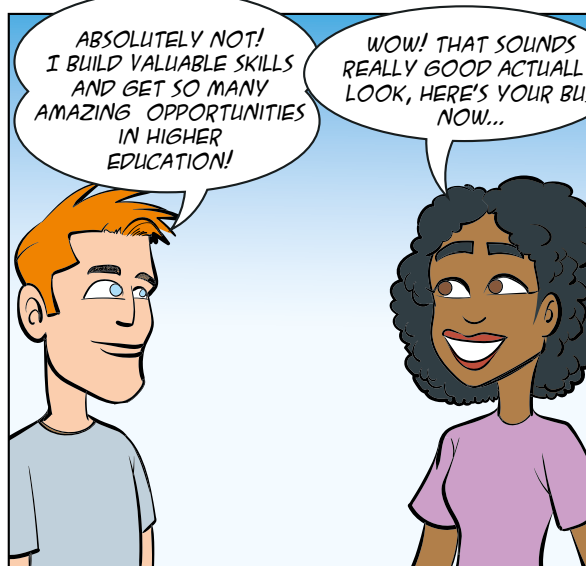
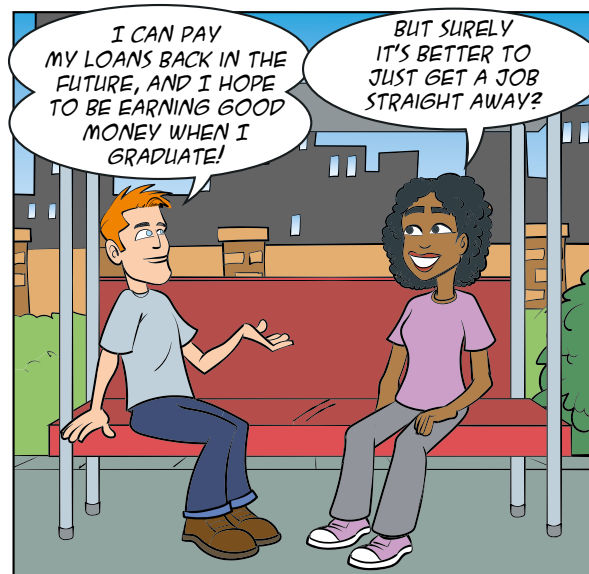
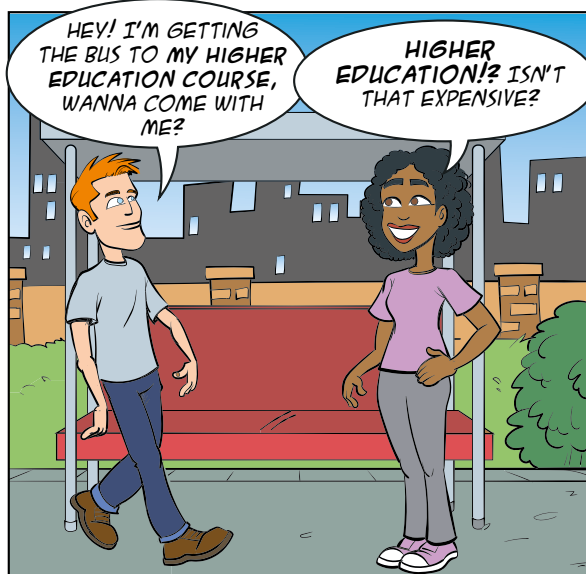
DEMINICE

ANSWERS ON PG. 15.

UNLOCK CAREER OPPORTUNITIES

YOU MAY HAVE A SPECIFIC CAREER IN MIND AND IN A LOT OF CASES THERE MAY BE MORE THAN ONE ROUTE YOU CAN TAKE TO ACHIEVE YOUR DREAM JOB. OR YOU MAY NOT BE PLANNING FOR A PARTICULAR CAREER, BUT STUDYING A HIGHER EDUCATION QUALIFICATION COULD OPEN UP A WIDE RANGE OF FUTURE CAREER OPTIONS.





DESIGNED BY LUKE, LORD LAWSON OF BEAMISH ACADEMY

STUDENT FINANCE

THERE ARE COSTS INVOLVED IN STUDYING HIGHER EDUCATION, BUT THIS CERTAINLY SHOULDN'T PUT YOU OFF, AS THERE'S LOTS OF SUPPORT AVAILABLE TO HELP YOU TAKE THIS NEXT STEP.

UNIVERSITIES AND COLLEGES CHARGE A TUITION FEE FOR THEIR HIGHER EDUCATION COURSES, WHICH IS USED TO PAY FOR TEACHING, FACILITIES, AND CAMPUS SERVICES TO ENSURE THAT YOU'LL HAVE A GREAT STUDENT EXPERIENCE. THE COST OF HIGHER EDUCATION COURSES DOES VARY ACROSS INSTITUTIONS, BUT THERE'S A MAXIMUM AMOUNT THAT CAN BE CHARGED. IT'S NOT NECESSARY TO PAY ANY OF THIS COST UPFRONT, AS TUITION FEE LOANS ARE PROVIDED BY THE GOVERNMENT TO COVER THE COST OF HIGHER EDUCATION COURSE FEES.

IN ADDITION, YOU CAN ALSO GET SUPPORT FROM THE GOVERNMENT FOR YOUR LIVING EXPENSES WHILST YOU'RE IN HIGHER EDUCATION. STUDENTS ARE ENTITLED TO A MAINTENANCE LOAN, WHICH CAN BE USED TO PAY FOR THINGS LIKE ACCOMMODATION, FOOD, EQUIPMENT, AND ANYTHING ELSE YOU MIGHT NEED TO BUY WHILST YOU'RE STUDYING. THE AMOUNT OF MAINTENANCE LOAN THAT YOU'LL BE ABLE TO CLAIM WILL VARY DEPENDING ON FACTORS SUCH AS:

- WHETHER YOU MOVE AWAY TO STUDY, OR LIVE AT HOME
- WHAT YOUR HOUSEHOLD INCOME IS
- WHETHER OR NOT YOU'RE STUDYING IN LONDON

REPAYMENT

YOU DON'T HAVE TO PAY ANY OF YOUR STUDENT LOAN BACK UNTIL YOU'VE FINISHED HIGHER EDUCATION AND STARTED EARNING AT LEAST £26,575 PER YEAR.* YOU'LL THEN START TO PAY BACK 9% OF ANYTHING YOU EARN OVER THIS ANNUAL THRESHOLD. YOU'LL ONLY EVER MAKE REPAYMENTS WHEN YOU ARE EARNING OVER THIS AMOUNT. AFTER 30 YEARS, ANY REMAINING DEBT THAT YOU HAVEN'T PAID OFF WILL BE CANCELLED.

*CORRECT AS OF APRIL 2020 (SUBJECT TO CHANGE).

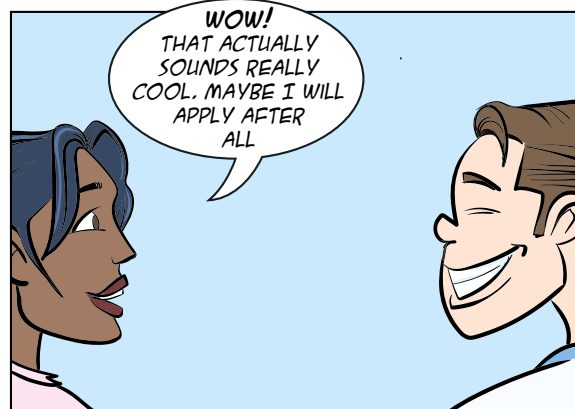
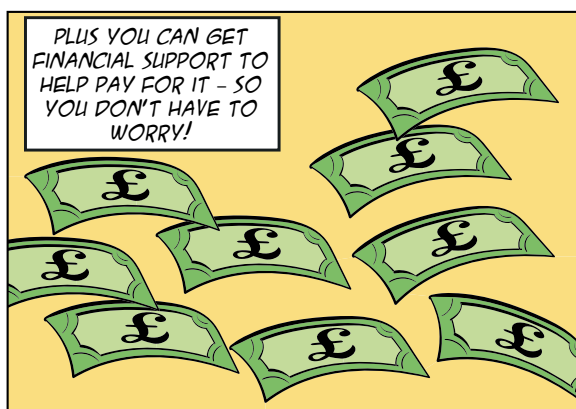
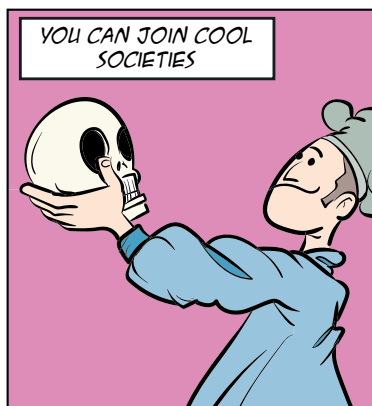
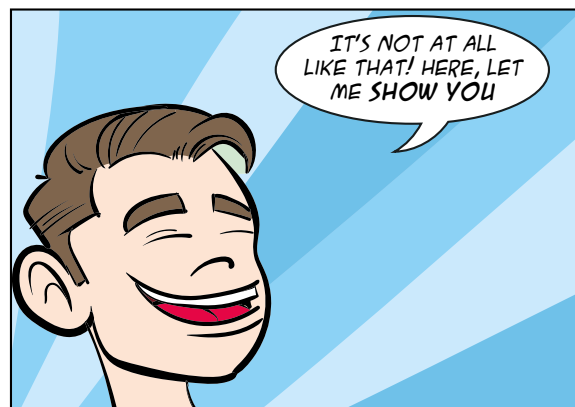
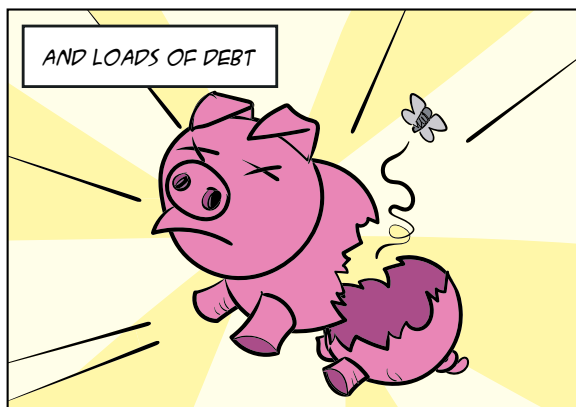
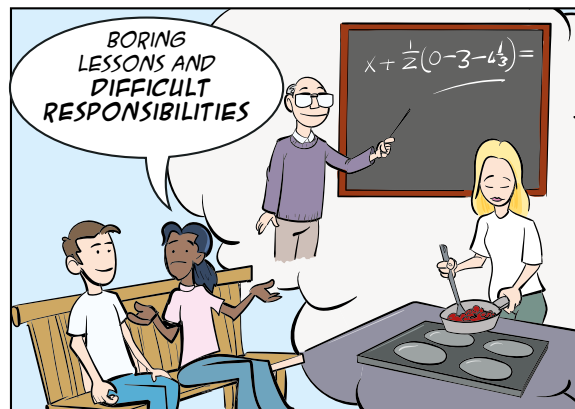
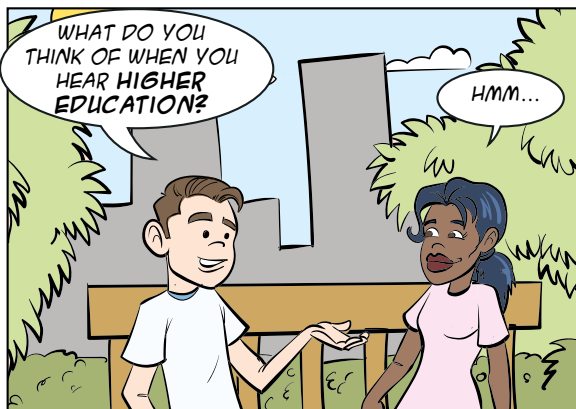
BURSARIES AND SCHOLARSHIPS

IN ADDITION TO THE FINANCIAL SUPPORT AVAILABLE FROM THE GOVERNMENT, SOME STUDENTS ALSO RECEIVE BURSARIES OR SCHOLARSHIPS FROM THEIR UNIVERSITIES OR COLLEGES. UNLIKE GOVERNMENT LOANS, BURSARIES AND SCHOLARSHIPS DO NOT HAVE TO BE PAID BACK. UNIVERSITIES AND COLLEGES WILL ALL HAVE DIFFERENT CRITERIA FOR ALLOCATING THIS FINANCIAL SUPPORT, SO IT'S A GOOD IDEA TO DO SOME RESEARCH WHEN YOU'RE THINKING ABOUT APPLYING TO STUDY AT A PARTICULAR INSTITUTION.

CAN YOU FIGURE OUT THE MONTHLY STUDENT LOAN REPAYMENTS FOR THESE SALARIES?*

SOCIAL MEDIA MANAGER	
AVERAGE SALARY = £27,575 PER YEAR	
9% OF ANYTHING OVER £26,575	
THEREFORE 9% OF £1,000	
9% OF £1,000 = £90 PER YEAR	
= £7.50 PER MONTH	
NURSE	
STARTING SALARY = £24,907 PER YEAR	
CHARTERED ACCOUNTANT	
STARTING SALARY = £30,000 PER YEAR	
NEWLY QUALIFIED TEACHER	
STARTING SALARY = £25,714 PER YEAR	
PHARMACIST	
STARTING SALARY = £31,365 PER YEAR	
BUILDING SURVEYOR	
AVERAGE SALARY = £18,000	

ANSWERS ON PG. 15.



DESIGNED BY ISABELLA, WALKER RIVERSIDE ACADEMY

CLUBS AND SOCIETIES

STUDYING FOR A HIGHER EDUCATION QUALIFICATION ISN'T ALL WORK AND NO PLAY! GOING TO UNIVERSITY OR COLLEGE OFFERS THE OPPORTUNITY TO MAKE FRIENDS AND SPEND TIME ENJOYING NEW OR EXISTING HOBBIES.

HIGHER EDUCATION INSTITUTIONS HAVE A RANGE OF EXTRACURRICULAR AND SOCIAL ACTIVITIES ON OFFER, SO YOU'RE SURE TO MEET OTHER PEOPLE WHO SHARE YOUR INTERESTS. THESE GROUPS ARE OFTEN CALLED SOCIETIES, AND THEY PROVIDE A GREAT OPPORTUNITY TO MEET NEW PEOPLE AND MAINTAIN A HEALTHY WORK-LIFE BALANCE. THERE ARE ALSO OPPORTUNITIES TO DEVELOP NEW SKILLS, WHICH COULD HELP YOUR STUDIES AND FUTURE EMPLOYMENT; SOCIETIES ARE RUN BY STUDENTS, SO EACH CLUB OFFERS THE CHANCE TO TAKE ON POSITIONS OF RESPONSIBILITY AND LEADERSHIP.

SPORTS

THERE ARE ALSO OPPORTUNITIES TO GET INVOLVED WITH SPORT AT A VARIETY OF DIFFERENT LEVELS. WHILST STUDYING FOR A HIGHER EDUCATION QUALIFICATION, YOU COULD TAKE UP A NEW SPORT JUST FOR FUN, OR PLAY ON BEHALF OF YOUR INSTITUTION AT A NATIONAL LEVEL.

9					11					20	3	5
A	B	C	D	E	F	G	H	I	J	K	L	M
24		2			15						17	
N	O	P	Q	R	S	T	U	V	W	X	Y	Z

11	7	7	21	1	9	3	3
----	---	---	----	---	---	---	---

4	16	9	5	9
---	----	---	---	---

1	9	20	6	24	8
---	---	----	---	----	---

9		13	9	2	2	10	3	3	9
---	--	----	---	---	---	----	---	---	---

2	22	7	21	7	8	16	9	2	22	17
---	----	---	----	---	---	----	---	---	----	----

16	7	13	20		13	3	6	5	1	6	24	8
----	---	----	----	--	----	---	---	---	---	---	----	---

22	6	15	21	7	16	17
----	---	----	----	---	----	----

9	16	21
---	----	----

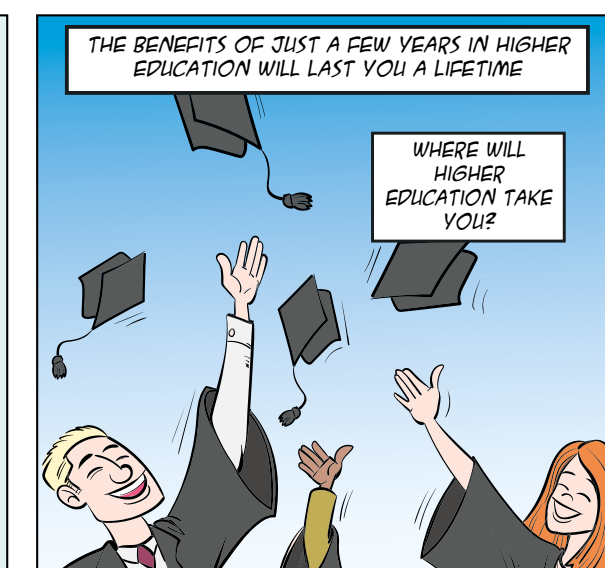
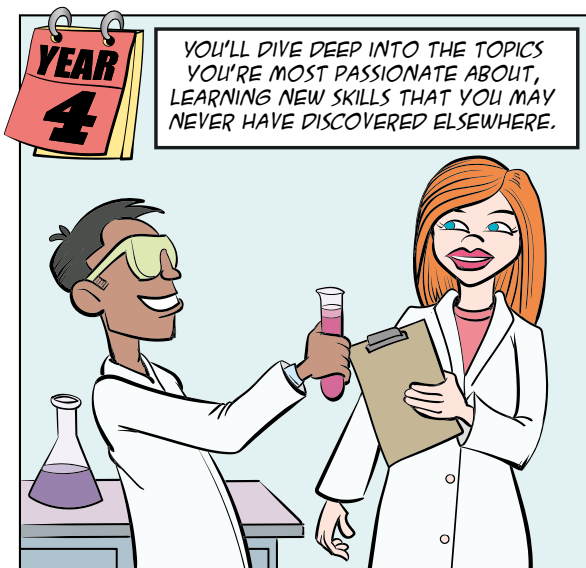
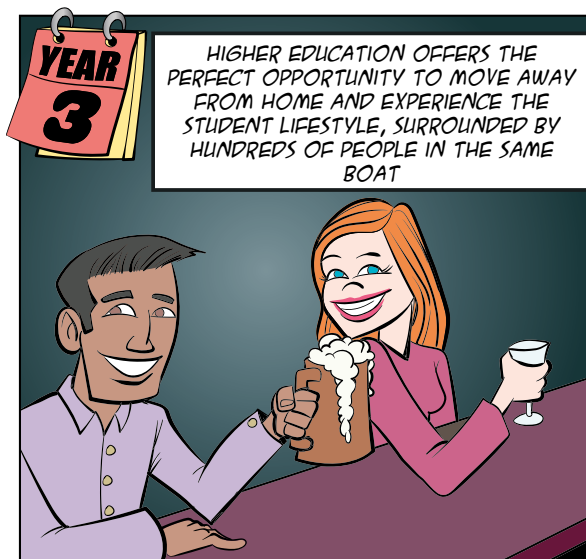
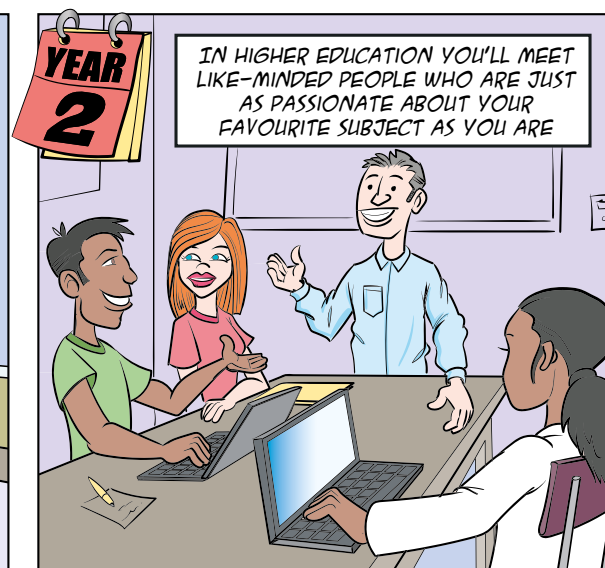
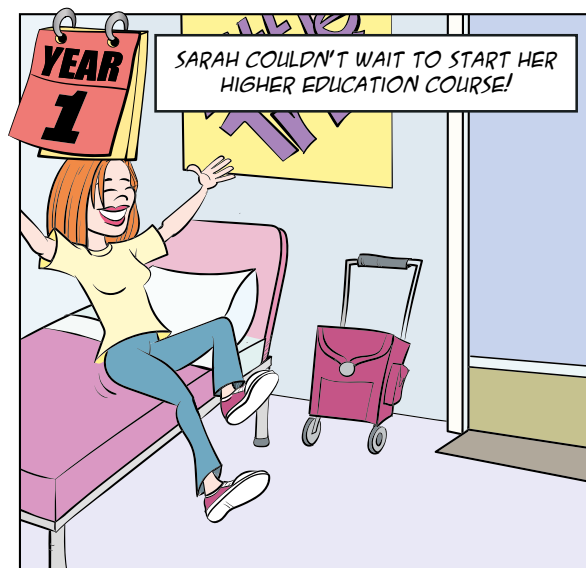
13	6	24	10	5	9
----	---	----	----	---	---

14	19	4	7
----	----	---	---

CAN YOU CRACK THE CRYPTOGRAM AND REVEAL THE NAMES OF STUDENT SOCIETIES AND SPORTS? EACH NUMBER CORRESPONDS TO A DIFFERENT LETTER OF THE ALPHABET. WE'VE GIVEN YOU A FEW TO GET YOU STARTED!



ANSWERS ARE ON PG. 15.



DESIGNED BY TRINITY, DURHAM SIXTH FORM CENTRE

futureme
OfS Uni Connect Programme

Home or away?

FOR MANY STUDENTS LIKE SARAH, HIGHER EDUCATION OFFERS AN EXCITING OPPORTUNITY TO MOVE AWAY FROM HOME AND HAVE A FIRST TASTE OF INDEPENDENCE LIVING IN A NEW PLACE. IF YOU DECIDE TO MOVE AWAY TO STUDY, YOU MIGHT CHOOSE TO LIVE IN STUDENT HALLS OR IN SHARED RENTED ACCOMMODATION. MOST HIGHER EDUCATION INSTITUTIONS WILL HOLD OPEN EVENTS THROUGHOUT THE YEAR. IF YOU'RE UNABLE TO VISIT IN PERSON, VIRTUAL OPEN DAYS ARE A GREAT ALTERNATIVE AND YOU CAN RESEARCH STUDENT ACCOMMODATION OPTIONS ON UNIVERSITY OR COLLEGE WEBSITES.

SEE THE UCAS WEBSITE FOR A LIST OF VIRTUAL CAMPUS TOURS FROM ACROSS THE COUNTRY!

SOME STUDENTS PREFER TO STAY AT HOME WHILST STUDYING FOR A HIGHER EDUCATION QUALIFICATION. YOU MAY WANT TO ATTEND A LOCAL UNIVERSITY OR COLLEGE WITHIN COMMUTING DISTANCE; THERE ARE 5 UNIVERSITIES ACROSS THE NORTH EAST AND A NUMBER OF COLLEGES WHICH ALL OFFER HIGHER EDUCATION. WHATEVER YOU DECIDE, IT'S ALL ABOUT MAKING THE BEST CHOICE FOR YOU!

TRANSITION TO HIGHER EDUCATION

BEING INDEPENDENT IN HIGHER EDUCATION DOES NOT MEAN THAT YOU HAVE TO DO EVERYTHING BY YOURSELF. IT ALSO MEANS KNOWING WHEN TO ASK FOR HELP AND WHERE TO GO FOR SUPPORT. FOR SOME STUDENTS, THE TRANSITION FROM COLLEGE OR SIXTH FORM TO HIGHER EDUCATION CAN BE CHALLENGING, BUT IT'S IMPORTANT TO REMEMBER THAT THERE'S LOTS OF HELP AVAILABLE TO SUPPORT YOU IN NAVIGATING STUDENT LIFE:

- ☞ ACADEMIC SUPPORT -- SUCH AS STUDY SKILLS GUIDANCE AND DROP INS WITH TEACHING STAFF OR PERSONAL TUTORS
- ☞ WELFARE AND WELLBEING -- INCLUDING STUDENT INFORMATION, ADVICE AND COUNSELLING SERVICES
- ☞ ADDITIONAL SUPPORT FOR STUDENTS WITH DISABILITIES

Myth busting

USE THE KNOWLEDGE YOU'VE LEARNT TO BUST SOME COMMON MYTHS ABOUT HIGHER EDUCATION!

Can you work out if each statement is true or false?

1. HIGHER EDUCATION CAN ONLY BE STUDIED AT UNIVERSITY TRUE ☐ FALSE ☐
2. I CAN STUDY AN APPRENTICESHIP AT UNIVERSITY LEVEL TRUE ☐ FALSE ☐
3. HIGHER EDUCATION COURSES ALL LAST THREE YEARS TRUE ☐ FALSE ☐
4. I WON'T HAVE TO PAY MY STUDENT LOANS BACK AS SOON AS I GRADUATE TRUE ☐ FALSE ☐
5. I HAVE TO STUDY A TRADITIONAL SUBJECT IN HIGHER EDUCATION (E.G. MATHS, ENGLISH, SCIENCE) TRUE ☐ FALSE ☐

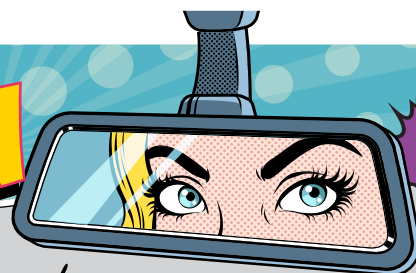
ANSWERS ARE ON PG. 15.



PLAN YOUR STUDENT LIFE

USE THE SPACE BELOW TO CREATE YOUR OWN COMIC STRIP ABOUT HIGHER EDUCATION. YOU COULD FOCUS ON WHAT IT MIGHT BE LIKE TO STUDY A PARTICULAR SUBJECT OR THE SOCIAL ACTIVITIES AND SOCIETIES YOU MIGHT GET INVOLVED IN.

REFLECTION



MY THOUGHTS

USE THIS SPACE TO WRITE DOWN YOUR THOUGHTS AND FEELINGS ABOUT HIGHER EDUCATION AFTER READING THIS GUIDE.

LOOK BACK AT PG2 HAVE YOUR QUESTIONS BEEN ANSWERED?

IF YOU STILL HAVE ANY QUESTIONS REMAINING, YOU CAN FIND OUT FURTHER INFORMATION HERE:

WWW.FUTUREME.AC.UK

FIND OUT MORE ABOUT HIGHER EDUCATION OPPORTUNITIES IN THE NORTH EAST.

[HTTPS://NATIONALCAREERS.SERVICE.GOV.UK](https://NATIONALCAREERS.SERVICE.GOV.UK)

FIND OUT WHAT DIFFERENT JOBS INVOLVE AT THE NATIONAL CAREERS SERVICE WEBSITE.

WWW.UCAS.COM

LOOK FOR COURSES AND APPLICATION TIPS ON THE UCAS WEBSITE.

WWW.AMAZINGAPPRENTICESHIPS.COM

LEARN MORE ABOUT APPRENTICESHIPS AND HOW TO APPLY

ANSWERS

PG. 3
DOWN

1. APPRENTICESHIP
3. QUALIFICATION
5. SEMINAR
6. SOCIETY

ACROSS

2. BURSARY
4. FRESHERS
7. INDEPENDENCE
8. LECTURE

PG. 7

- BUSINESS MANAGEMENT
- JOURNALISM
- MUSIC
- PHYSIOTHERAPY
- SPANISH
- GRAPHIC DESIGN
- ENGINEERING
- ENVIRONMENTAL SCIENCE
- MEDICINE

P.9

- NURSE [£0 PER MONTH]
- CHARTERED ACCOUNTANT [£25.68 PER MONTH]
- NEWLY QUALIFIED TEACHER [£0 PER MONTH]
- PHARMACIST [£35.92 PER MONTH]
- BUILDING SURVEYOR [£160.68 PER MONTH]

P.11

9	1	13	4	10	11	8	22	6	14	20	3	5
A	B	C	D	E	F	G	H	I	J	K	L	M
24	7	2		16	15	21	19				17	
N	O	P	Q	R	S	T	U	V	W	X	Y	Z

FOOTBALL

- DRAMA
- BAKING
- A CAPPELLA
- PHOTOGRAPHY
- ROCK CLIMBING
- HISTORY
- ART
- CINEMA
- JUDO

PG. 13

1. FALSE. HIGHER EDUCATION COVERS ALL QUALIFICATIONS AT LEVEL 4 AND ABOVE. HIGHER EDUCATION CAN BE STUDIED AT UNIVERSITIES, BUT ALSO AT SOME COLLEGES AND IN PARTNERSHIP WITH WORKPLACES (APPRENTICESHIPS).
2. TRUE. DEGREE APPRENTICESHIPS ARE EQUIVALENT TO TRADITIONAL UNIVERSITY DEGREES. DEGREE APPRENTICESHIP OPPORTUNITIES CAN BE VERY COMPETITIVE, AS THEY ALLOW STUDENTS TO COMBINE WORKPLACE EXPERIENCE AND EARNING A WAGE WITH STUDYING FOR A HIGHER EDUCATION QUALIFICATION.
3. FALSE. THERE ARE LOTS OF DIFFERENT TYPES OF HIGHER EDUCATION QUALIFICATIONS, WHICH REQUIRE DIFFERENT LENGTHS OF STUDY (FROM 1 YEAR UPWARDS). IF YOU CHOOSE TO STUDY PART-TIME, THIS CAN ALSO AFFECT HOW LONG A COURSE LASTS.
4. TRUE. YOU WILL ONLY START PAYING BACK YOUR STUDENT LOAN WHEN YOU START EARNING OVER £26,575 PER YEAR* AND YOU WILL ONLY PAY BACK A SMALL PERCENTAGE OF YOUR SALARY.
5. FALSE. THERE ARE OVER 50,000 COURSES WHICH YOU COULD CHOOSE FROM, RANGING FROM TRADITIONAL SUBJECTS THAT YOU CAN STUDY AT SCHOOL, THROUGH TO ANIMATION, POLICING, AND ETHICAL HACKING.

CONTACT US:



WWW.FUTUREME.AC.UK

INFO@FUTUREME.AC.UK

@FUTUREME_NE

FUTUREMENORTHEAST

FUTUREME_NE

THE IDEAS IN THIS COMIC BOOK WERE DEVELOPED BY MOLLY (EASINGTON ACADEMY), MILLY (BIDDICK ACADEMY), LUKE (LORD LAWSON OF BEAMISH ACADEMY), ISABELLA (WALKER RIVERSIDE ACADEMY) AND TRINITY (DURHAM SIXTH FORM CENTRE), AND WERE THE WINNING ENTRIES OF THE 2020 FUTUREME CHALLENGE.



WITH THANKS TO ANTON BRAND FOR TRANSFORMING THE WINNING IDEAS INTO THE ARTWORK FOUND IN THIS COMIC BOOK.